

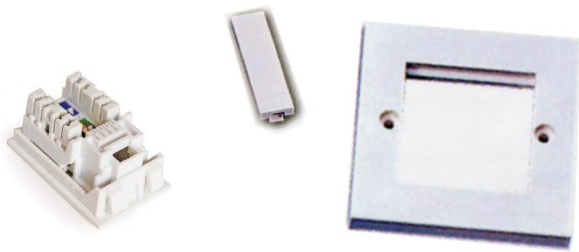


## ARNET Cabling System Products - Category 5e U/UTP

### Category 5e LJ6C Module (UK Style)

LJ6C Modules are ideal for use in any work area situation where snap-in connectors are required. They are especially suitable for use in floor boxes and trunking-mounted faceplates where rear space is limited.

To accompany the module, Arnet offers a dual single-gang faceplate to fit standard UK-style electrical back-boxes. Blanking plates are also available for instances when only one LJC6 module is required in a faceplate.



Fully tested and UL certified to: TIA/EIA 568-C-2 and ISO/IEC 11801:2002

Dimensions: 25 X 38 mm

Material: Fire Retardant ABS

Colour: Gloss Bright White

Termination Type: Krone-style IDC coded to T568B wiring

Conductor Capacity: 22 - 26 AWG (0.64 - 0.4 mm)

Faceplate Dimensions: 86 mm x 86 mm

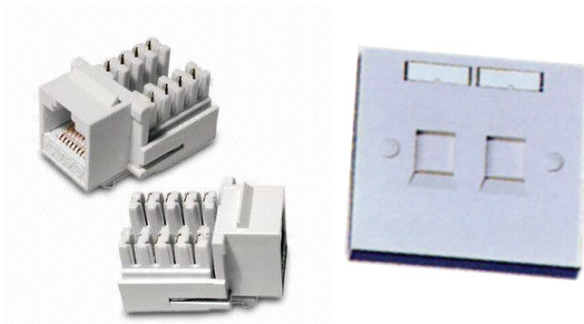
Description	Part Number
Category 5e LJ6C module	ARC5- UK- WHT
UK-style dual-port single-gang LJ6C faceplate 86 mm x 86 mm	ARC5-FP-UK-02-Faceplate with dual outlet
LJ6C Faceplate Blank	ARC5-FP-UK-02-BLANK

### Category 5e Keystone Module

The Category 5e keystone module features Dual-style termination blocks presented in a 180 degree format for optimum performance. Conductors are terminated using a standard 110 or Krone punch-down tool.

Modules are in white to match the keystone faceplate.

UK-size keystone faceplates available in dual-port single-gang style.



Fully tested and UL certified to: TIA/EIA 568-C-2 and ISO/IEC 11801:2002

Material: Fire Retardant ABS

Colour: Gloss Bright White

Termination Type: 110 and Krone-style coded for T568A and T568B wiring

Conductor Capacity: 22 - 26 AWG (0.64 - 0.4 mm)

Faceplate Dimensions: 86 mm x 86 mm

Description	Part Number
Category 5e Keystone module, white	ARC5- KS-WHT
UK-style dual-port single-gang keystone faceplate 86 mm x 86 mm	ARC5-FP-KS-02-Faceplate with dual outlet

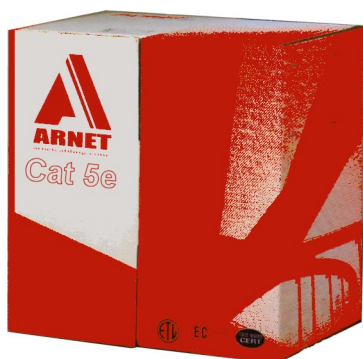


## ARNET Cabling System Products - Category 5e U/UTP

### Category 5e U/UTP Cable

Arnet Category 5e 4-pair U/UTP cable is verified to exceed TIA/EIA-568-C-2 and ISO/IEC 11801:2002 performance specifications.

The cable has positive ACR beyond 155 MHz and is characterised and tested to 250 MHz.



Description	Part Number
Category 5e U/UTP 4-pair cable, PVC jacket, 305 metre reel	ARC5-UTP - PVC
Category 5e U/UTP 4-pair cable, LSOH jacket, 305 metre reel	ARC5-UTP - LSOH

### Category 5e U/UTP Patch Cords

All Arnet Category 5e patch cords are tested to TIA/EIA 568-C.2 and ISO/IEC 11801:2002 standards and fully support Category 5e/Class D channel performance.



Description	Part Number
Cat 5e Patch Cord, 1 metre	ARC5-PC-1M
Cat 5e Patch Cord, 3 metres	ARC5-PC-3M
Cat 5e Patch Cord, 5 metres	ARC5-PC-5M
Please ask for details of other cord lengths	

Fully tested and ETL certified to: TIA/EIA 568-C.2 Category 5e and ISO/IEC 11801:2002 Class D

Applications: - IEEE 802.3:1000BASE-T (Gigabit Ethernet), 100BASE-TX, 10BASE-T  
- 52/155 Mb/s ATM  
- ANSI X3.263:100 Mb/s  
- 4/16 Mb/s Token Ring

Cable Type: U/UTP

No. of Pairs: 4

Conductor Size: 24 AWG, 0.51 mm diameter

Jacket Materials: Flame-retardant PVC or Low-Smoke Zero Halogen

Colour: Grey

Input Impedance: 100 ohms  $\pm$  15 ohms

Nominal Velocity of Propagation (NVP): 0.66 (66%)

Fully tested and certified to: TIA/EIA 568-C.2 Category 5e and ISO/IEC 11801:2002 Class D

Applications: - IEEE 802.3:1000BASE-T (Gigabit Ethernet), 100BASE-TX, 10BASE-T  
- 52/155 Mb/s ATM  
- ANSI X3.263:100 Mb/s  
- 4/16 Mb/s Token Ring

Connector: 50-micron gold plated RJ-45 male to male T568B wiring

Cable Type: U/UTP

No. of Pairs: 4

Conductor Size: 24 AWG, 0.51 mm diameter stranded

Jacket Material: Flame-retardant PVC

Colour: Grey



## ARNET Cabling System Products - Category 5e U/UTP

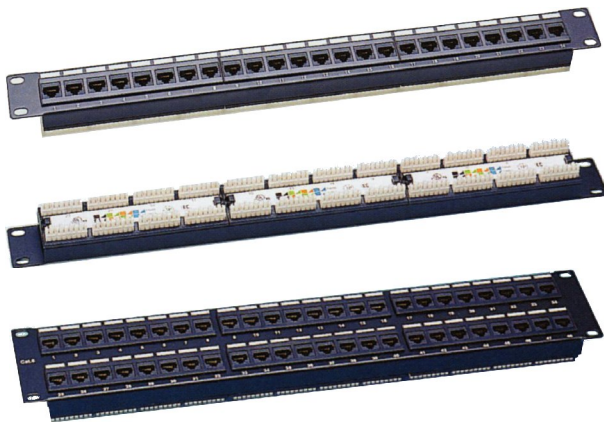
### Category 5e U/UTP Patch Panel

Arnet Category 5e Patch panels fit industry-standard 19" racks and are available in 24 and 48 port sizes.

The panels are tested by Delta to current industry standards and are UL listed.

Rear cable management is provided as standard.

Writable paper label strips are included



Fully tested by Delta and UL listed to: TIA/EIA 568-C-2 and ISO/IEC 11801:2002

Number of Ports: 24 and 48 port versions available

Dimensions: 24 port - 19" x 1.75" (1U)  
483 mm x 44.5 mm  
48 port - 19" x 3.5" (2U)  
483 mm x 89 mm

Termination: Dual type termination block, accepts both Krone type and 110 termination tools

Supports both T568A and T568B wiring

Conductor Capacity: 22 - 26 AWG (0.64 - 0.4 mm)

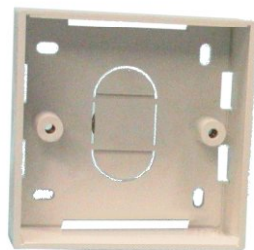
Description	Part Number
Category 5e Patch Panel, 24 port	ARC5-PP-24
Category 5e Patch Panel, 48 port	ARC5-PP-48

### UK-Style Surface-mount Back Box

Manufactured in ABS, these boxes are less brittle than traditional plastic versions.

Cable entry knock-outs in the back and sides.

A selection of mounting holes for easy installation.



Material: Fire retardant ABS Plastic

Dimensions: 86 mm high x 86 mm wide (height x width)

Dimensions: 21 mm (18 mm internal) (depth)  
32 mm (29 mm internal)  
45 mm (42 mm internal)

Colour: Bright White

Description	Part Number
Back Box UK-style single 86 x 86 x 21 mm	ARBB-UKS-21
Back Box UK-style single 86 x 86 x 32 mm	ARBB-UKS-32
Back Box UK-style single 86 x 86 x 45 mm	ARBB-UKS-45

*Distributed by:*

**SEIFE SOLUTIONS LIMITED**

Enterprise House, 297 Pinner Road, Harrow, Middlesex, HA1 4HS - United Kingdom

Tel: + 44 (0)7915 345310 [www.seifesolutions.com](http://www.seifesolutions.com)

[www.arnetsystems.com](http://www.arnetsystems.com)

Telephone +44 (0)7915 435310