



## PowerCat™ 6 UTP Solutions

### What we do

For over 30 years Molex has manufactured comprehensive copper and optical fibre data transport solutions for the transmission of voice, data and imaging signals

### Peace of mind

The PowerCat 6 system is covered by a Global 25 Year Product, System Performance and Application Assurance Warranty

### Standards Compliance

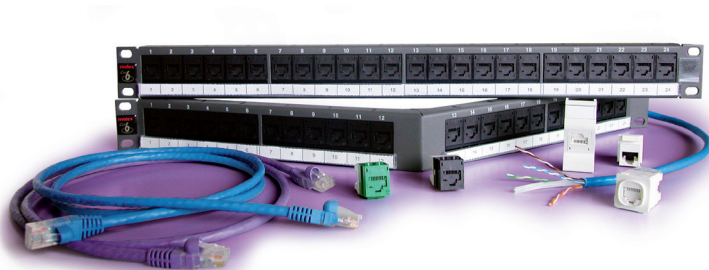
TIA/EIA 568-B.2-1  
ISO/IEC 11801:2002  
AS/NZS 3080:2002  
EN 50173:2007



## PowerCat™ 6 - UTP Solutions

The PowerCat™ 6 range of Category 6 compliant products provide a high performance end-to-end UTP copper solution, designed to meet and exceed all relevant international performance standards, including TIA/EIA 568-B.2-1, ISO/IEC 11801:2002 and AS/NZS 3080:2003.

Consisting of cable, patch panels, patch cords and work area modules, the PowerCat 6 - Category 6 solution provides a significant leap in performance and data transmission capability when compared to Category 5e.



### Highlights of the PowerCat 6 solution

- Total end-to-end horizontal cabling solution
- Compliant to TIA/EIA 568-B.2-1, ISO/IEC 11801:2002 and AS/NZS 3080:2003
- Superior headroom to that of Category 5e performance
- Backwards compatible with Molex Category 5e systems – ensuring support for legacy applications
- Independently tested and verified

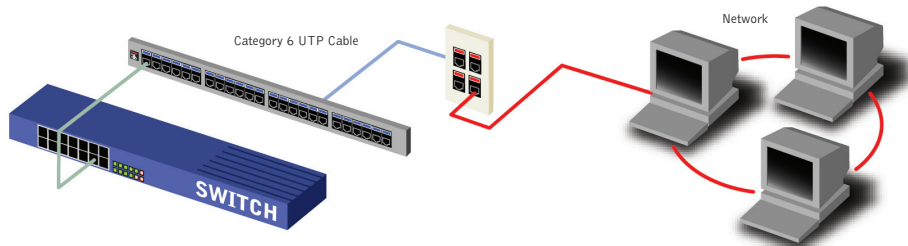
### What is the Advantage of Category 6 over Category 5e?

Put simply, a Category 6 solution provides positive PowerSum ACR beyond 200Mhz. This means that a Category 6 compliant network infrastructure can provide twice the normal bandwidth of existing Category 5e cabling systems. Other benefits, such as enhanced Return Loss performance also ensure support for high-speed, bidirectional applications like Gigabit Ethernet.

### Superior product performance

The PowerCat 6 solution utilises our RJ-45 DataGate™ connector technology. The DataGate connector features a patented 'spring-loaded shutter' providing protection from dust and contaminants, and the patented V-shaped IDC contacts improve installation speed and enhance cable retention.

Designed to support high speed networks, cable and patch cords are available in both PVC or LSZH sheaths and an angled patching solution is available to support high density installations where communications room space is limited.



### Independently tested

To ensure that our product consistently performs to the optimum performance we partnered with Intertek ETL SEMKO - the world's largest product and commodities testing organisation - to objectively test and verify the Channel and Link performance of the PowerCat 6 solution.

Every 3 months, ETL randomly purchase Molex Category 6 products off the open market and tests them in channel environments to verify performance to the TIA/EIA 568-B and ISO/IEC 11801 standards. This testing is completed independently of Molex and in the event that any products fail, ETL verification status is removed. Our continuous affiliation to this programme provides a further safety net to our customers, ensuring they always receive the best quality product.



## PowerCat™ 6 UTP solutions

### Americas

Corporate Headquarters  
+1 630 969 4550

### Asia Pacific

Australia  
+61 3 9971 7111  
China  
+86 21 5048 0889  
India  
+91 80 4129 3500

### EMEA

United Kingdom  
+44 (0)2392 205 800  
Czech Republic  
+420 222 191 418  
Poland  
+48 22 333 81 50  
Russia  
+7 495 642 64 55  
Ukraine  
+38 (044) 494 2642  
Middle East  
+971 4 299 0430  
South Africa  
+27 11 807 2577



# PowerCat™ 6 - UTP Solutions

## Ordering Information

### Cable

Order No.	Description
CAA-00286	4 Pair Cable PVC U/UTP C6 - 305m Reel in a Box
CAA-00324	4 Pair Cable LSZH IEC 332.1 U/UTP C6 - 305m Reel in a Box
CAA-00326	4 Pair Cable PVC U/UTP C6 - 500m Reel
CAA-00325	4 Pair Cable LSZH IEC 332.1 U/UTP C6 - 500m Reel

### Patch Panels

Order No.	Description
PID-00141-EU	24 Port PowerCat 6 Patch Panel, 568A/B, 1U
PID-00142-EU	48 Port PowerCat 6 Patch Panel, 568A/B, 2U
PID-00156	24 Port Angled PowerCat 6 Patch Panel, 568A/B, 1U
PID-00157	48 Port Angled PowerCat 6 Patch Panel, 568A/B, 1U

**NOTE** : Patch Panel accessories are available. Please refer to our Product & Solutions Guide for more information

### Patch Cords

PVC Sheath	LSOH Sheath	Description
PCD-00348-**	PCD-00364-**	PowerCat 6 Slim Boot Patch Cord, 568A/B - 1m
PCD-00349-**	PCD-00365-**	PowerCat 6 Slim Boot Patch Cord, 568A/B - 1.5m
PCD-00350-**	PCD-00366-**	PowerCat 6 Slim Boot Patch Cord 568A/B - 2m
PCD-00352-**	PCD-00368-**	PowerCat 6 Slim Boot Patch Cord 568A/B - 3m
PCD-00355-**	PCD-00371-**	PowerCat 6 Slim Boot Patch Cord 568A/B - 5m
PCD-00360-**	PCD-00376-**	PowerCat 6 Slim Boot Patch Cord 568A/B - 10m

\*\* Colour Options - 0C = Red, 0E = Grey, 0H = Blue, 0J = Green, 0K = Yellow, 0P = Purple, 0N = Orange, BK = Black

**NOTE** : Additional lengths are available. Please speak to your local Molex representative for more information

### Work Area Modules

Order No.	Description
MMS-00013-02	Angled MOD-SNAP III Module RJ45 568A/B UTP C6 - White
MGB-00001-02	Angled Contura Module RJ45 568A/B UTP C6 - White
MEU-00056-02	Euromod II Module RJ45 568A/B UTP C6 - White
MLG-00021-02	22.5 x 45mm Legrand Compatible Module RJ45 568A/B UTP C6 - White
MLG-00024-02	45 x 45mm Legrand Compatible Module RJ45 568A/B UTP C6 - White
MIT-00012-0E	Vimar Compatible Module RJ45 568A/B UTP C6 - Black
MIT-00011-0E	BTicino Compatible Module RJ45 568A/B UTP C6 - Black
WNC-00030-02	1 Port DIN Module RJ45 568A/B UTP C6 - White
WNC-00031-02	2 Port DIN Module RJ45 568A/B UTP C6 - White

**NOTE** : Work Area Modules are available in various colours to suit all environments and decor.  
Please refer to our website for more information

### Wallplates

Order No.	Description
WGB-00001-02	Single Gang Wallplate (includes grid plate) - White
WGB-00002-02	Double Gang Wallplate (includes grid plate) - White
17-0101-02	Unlabelled Single Gang Euromod Wallplate - 86 x 86 x 10mm
17-0102-02	Unlabelled Double Gang Euromod Wallplate - 86 x 145 x 10mm
17-0111-02	Labelled Single Gang Euromod Wallplate - 86 x 86 x 10mm
17-0112-02	Labelled Double Gang Euromod Wallplate - 86 x 145 x 10mm
42-311-02	Single Gang MOD-SNAP 1 Aperture - 86 x 86mm
42-312-02	Single Gang MOD-SNAP 2 Aperture - 86 x 86mm
42-314-02	Double Gang MOD-SNAP 4 Aperture - 86 x 146mm

**NOTE** : Wallplates are available in various colours to suit all environments and decor.  
Please refer to our website for more information

### Consolidation Points

Order No.	Description
CPT-00032	6 Port PowerCat 6 Consolidation Point Enclosure, UTP, 568A/B
CPT-00033	8 Port PowerCat 6 Consolidation Point Enclosure, UTP, 568A/B